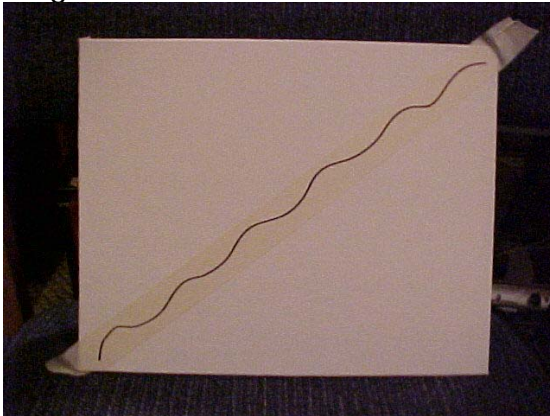


I am going to show you how I paint the trellis design. I use this design as a background for my mailbox covers and other surfaces.
I have used an 8 ½ x 11 canvas board. You can paint this on any surface you choose. First prep your surface.

Step 1:

Start in the middle area of the surface and lay a piece of masking tape at a 45 degree angle. If the item is square or rectangular, you would go from one point to the opposite point laying the masking tape down. I have made a mark on each piece of tape due to the light contrast.

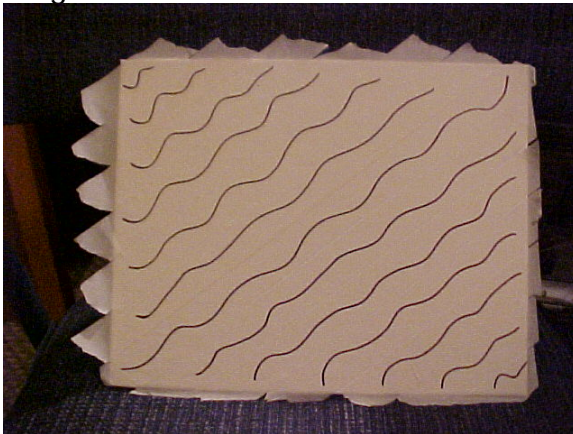
Diagram 1 below:



Step 2:

Continue to lay tape, covering the entire surface at the same angle making sure the tape is adjacent to each other.

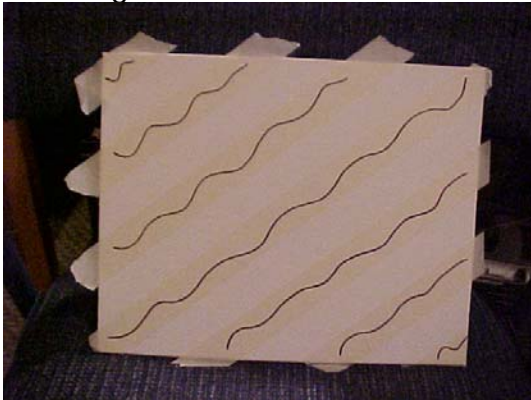
Diagram2 below



Step 3:

Remove every other strip of tape exposing the surface underneath

See Diagram 3 below:



Step 4:

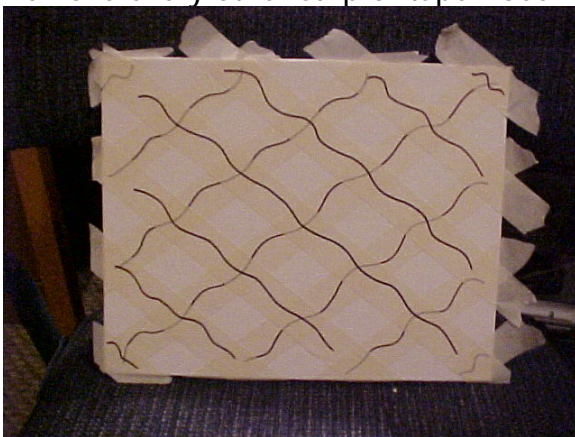
Lay the masking tape the same way but laying it in the opposite direction.

See Diagram 4 below:



Step 5:

Remove every other strip of tape. See Diagram 5 below:



Step 6:

Either spray or paint or sponge over each of the exposed area's shown. I sponged mine.

See Diagram 6 below:

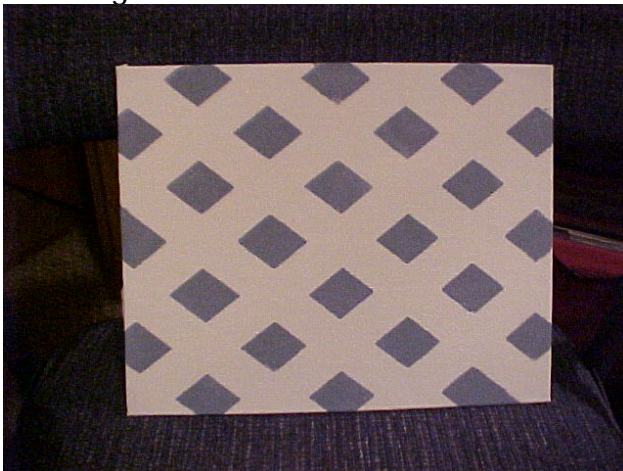


Step 7:

Next carefully remove all the tape from the surface.

You now have a grid or checkerboard design.

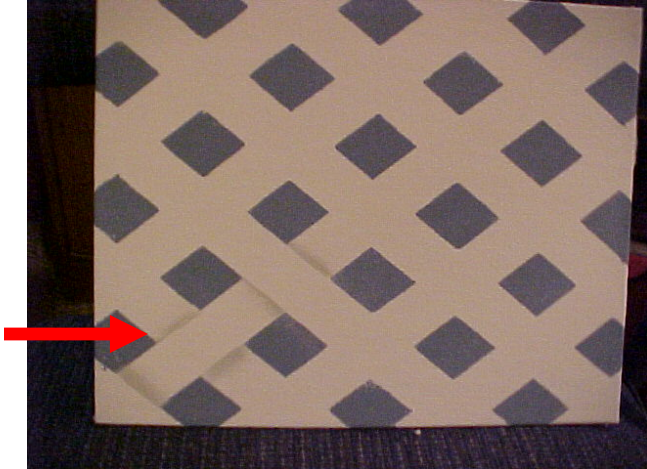
See Diagram 7 below:



Step 8: Shading.

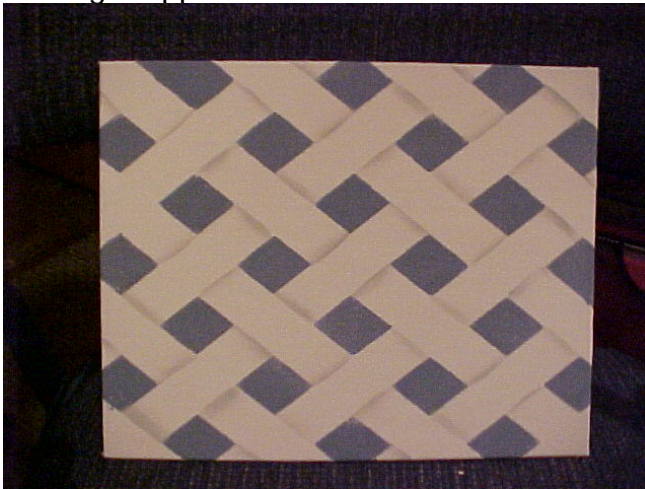
Use a soft but darker color to shade your design. If shading a white trellis use a light to medium gray. I used dove gray on this one. Use a #12 shader and on a damp brush load one side with the shading color and the other side with floating medium. You will be shading around the design to make it look like it is weaving in and out. I start at the corner and work my way out. This take some patience and you need to be careful to make sure you are shading to make the weave fit together.

See diagram 8 below:



Last Step:

Continue to follow the pattern floating the color along the edge of the grid making it appear to weave in and out. See finished diagram below:



I hope this has helped you to learn how to paint a trellis.

Thanks.

Jody